

# TOWER CRANE



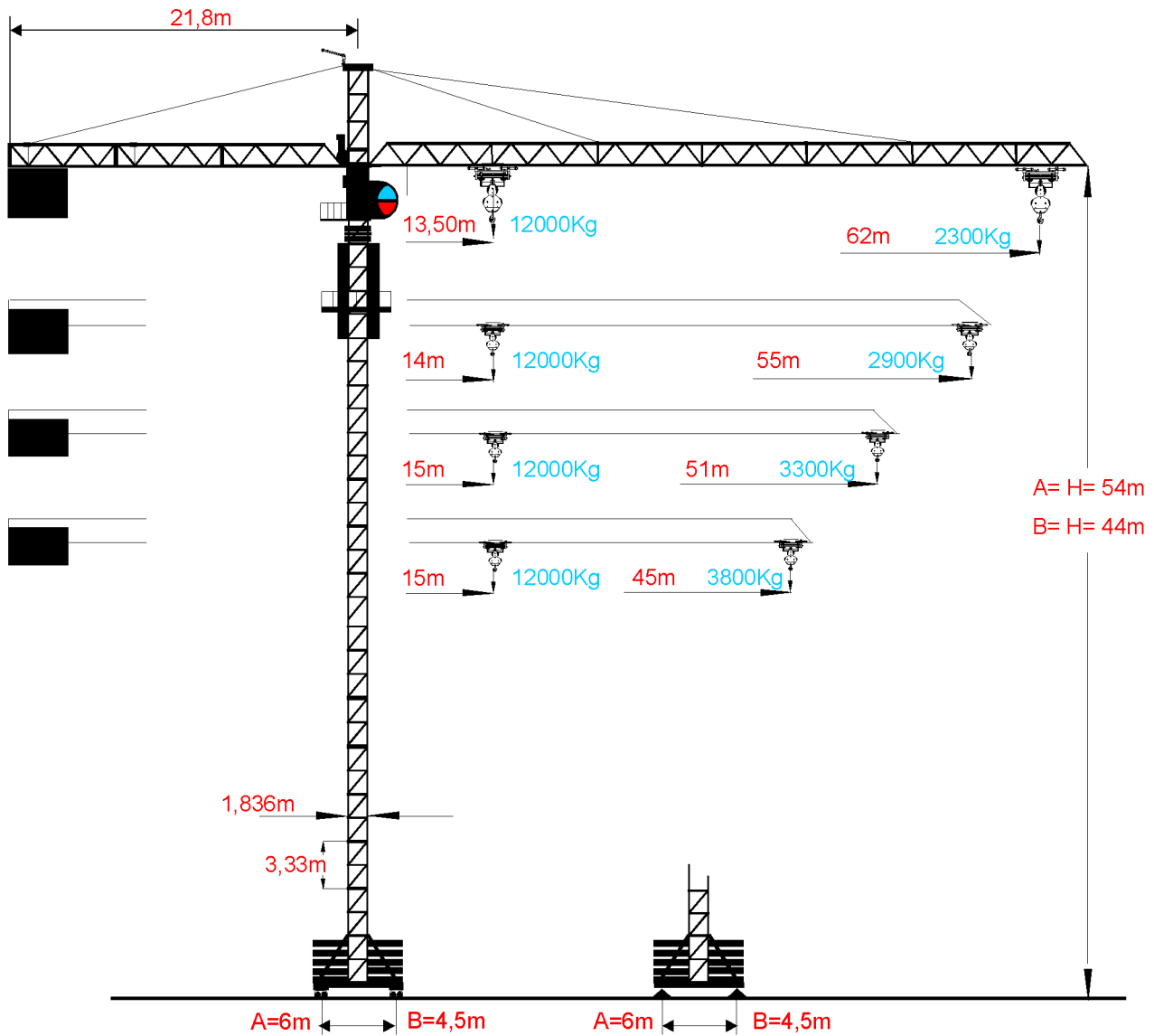
# FERING

Bosnia & Herzegovina  
 phone: +387(0)35 704 950  
 fax: +387(0)35 704 952  
 e-mail: [info@fering.com.ba](mailto:info@fering.com.ba)  
 web: [www.fering.com.ba](http://www.fering.com.ba)



## F60-23

### HEIGHT & WEIGHT STATISTIC



### HOIST STATISTIC

TONS 2 FALL (t)	6	5,6	4,7	4	3,5	3,1	2,8	2,3
METERS	13,5	20	25	28	30	35	40	45
TONS 4 FALL (t)	12	7,8	6	6	5,6	4,7	4	3,5
TONS 2 FALL (t)	6	4,9	4,2	3,65	3,25	2,9		
METERS	14	20	27	29	35	40	45	50
TONS 4 FALL (t)	12	8,5	6	6	4,9	4,2	3,65	3,25
TONS 2 FALL (t)	6	5	4,4	3,8	3,3			
METERS	15	20	28	30	35	40	45	51
TONS 4 FALL (t)	12	8,8	6	6	5	4,4	3,8	3,3
TONS 2 FALL (t)	6	5	4,4	3,8				
METERS	15	20	28	30	35	40	45	
TONS 4 FALL (t)	12	8,8	6	6	5	4,4	3,8	

# TOWER CRANE



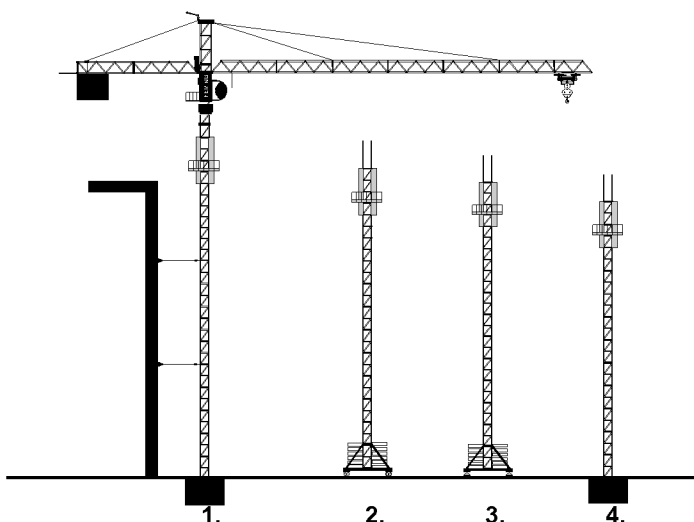
# FERING

Bosnia & Herzegovina  
 phone: +387(0)35 704 950  
 fax: +387(0)35 704 952  
 e-mail: [info@fering.com.ba](mailto:info@fering.com.ba)  
 web: [www.fering.com.ba](http://www.fering.com.ba)



## F60-23

### MONTING WAYS



- 1. CRANE TIED TO THE STRUCTURE WITH ANCHORS
- 2. CRANE WITH TRANSLATION
- 3. CRANE WITH STEEL FOOT
- 4. CRANE FIXED ON CONCRETE BASE

### DRIVE UNITS

	kW	m/min		kW	m/min
	5,5	0-60		33 33 11	III 60
	3x1.9	0-0.9			II 30
	2x5.5	0-20			I 6
					IV
					III 30
					II 15
					I 3

### CRANE BASIC INFO

This type of tower crane has been designed for works of all heights and extends, which require high capacities and service speeds.

Jib length is up to 60m with the possibility of adjusting the customer's request

It can be used on standard height or anchored

The assembly is simple, cost-effective, fast and safe.

All electromechanical assemblies are installed on a rotating platform

The steel structure in quality S 355 by EN standard 10025

It is a brand new generation of cranes that adjusts to various needs in the construction industry.