

TOWER CRANE



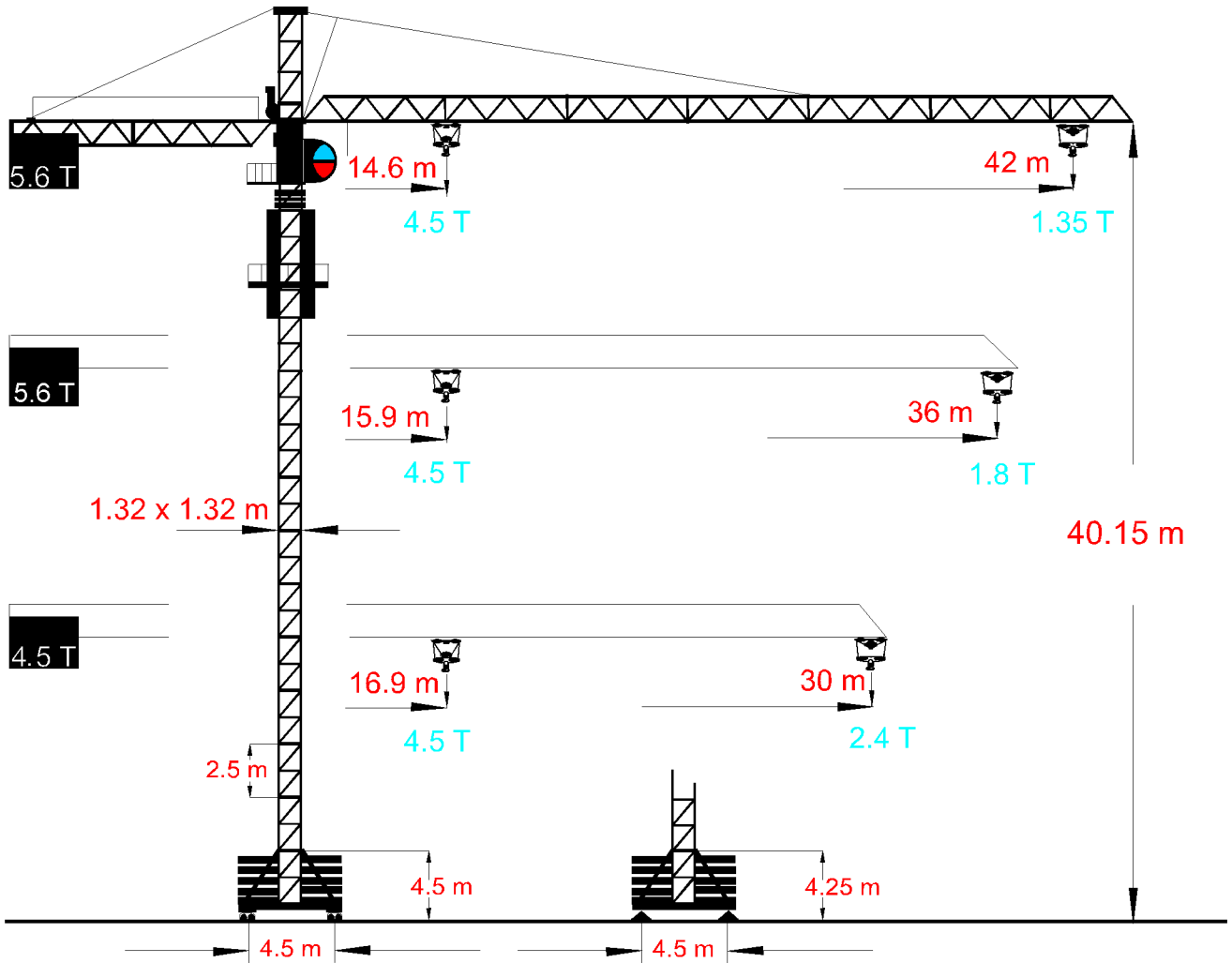
FERING

Bosnia & Herzegovina
 phone: +387(0)35 704 950
 fax: +387(0)35 704 952
 e-mail: info@fering.com.ba
 web: www.fering.com.ba



F42-13

HEIGHT & WEIGHT STATISTIC



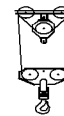
HOIST STATISTIC

TONS 2 FALL (t)	2,25	2	1,5	1,35				
METERS	14,6	16,5	21	25	27	30	39,5	42
TONS 4 FALL (t)	4,5	4	3	2,5				

TONS 2 FALL (t)	2,25	2	1,8			
METERS	15,9	21	27	30	32	36
TONS 4 FALL (t)	4,5	3,5	2,5			

TONS 2 FALL (t)	2,25	2	1,8	
METARA	16,9	21	24,5	30
TONS 4 FALL (t)	4,5	3,5	3	2,4

2 ROPE FALL



4 ROPE FALL



TOWER CRANE



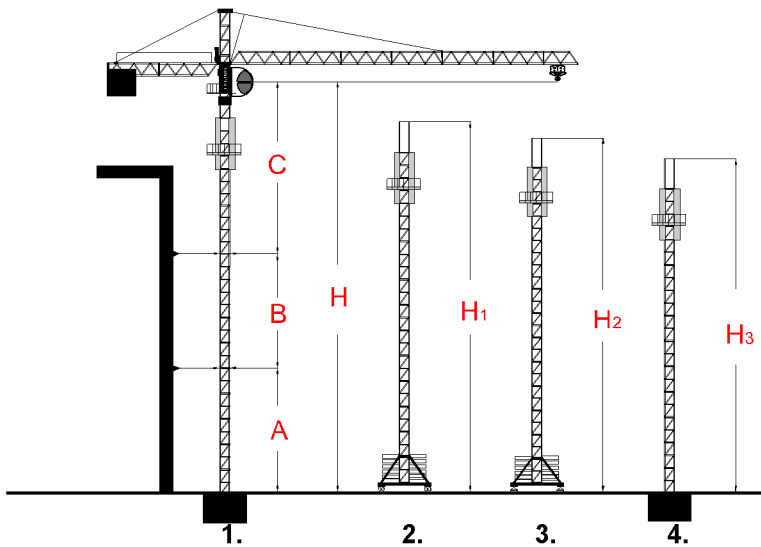
FERING

Bosnia & Herzegovina
 phone: +387(0)35 704 950
 fax: +387(0)35 704 952
 e-mail: info@fering.com.ba
 web: www.fering.com.ba



F42-13

HEIGHT STATISTIC



- 1.** CRANE TIDE TO THE STRUCTURE WITH ANCHORS
- 2.** CRANE WITH TRANSLATION
- 3.** CRANE WITH STEEL FOOT
- 4.** CRANE FIXED ON CONCRETE BASE

	meters
A minimal/maximal	25
B minimalan/maximalan	2.5x44=110*
C maximal	25
H maximal	165
H1 maximal	40,15
H2 maximal	39,9
H3 maximal	35

DRIVE UNITS

	kW	m/min		kW	m/min	
	2.2/3	30/60		18.4 18.4 4.5	III 60 II 30 I 6	
	2x1.9	0-09				III 30 II 15 I 3
	2x2.2	0-20				

CRANE BASE INFO

STRUCTURE: Steel structure in quality S 355 by EN standard 10025.
TOWER: One-piece or 4 panel tower elements of 2.5m length with ladder.
 Fast assembly with a special PIN connections.
HOISTING: Reduction gear and 3 speeds motor with built-in electromagnetic brake remote controlled when in motion and under load, creep speed for accurate load spotting.
SLEWING: Ball bearing ring, planetary gear and motor with built-in Eddy current brake witch allows second and progressive stopping and ensures accurate load spotting. Second brake of emergency, can be opened from the ground.
TROLLEY: Worm reduction gear and motor with built-in electromagnetic brake. Transmission by rope with adjustable tension.
TRAVELING: On straight curved tracks with 8 high quality weels. Two diagonally mounted reduction gears. Transmission of motion through hydraulic couplings.
ERECTION: Quick erection with pin connection of all sections of chassis tower, jib and counter jib. Outside telescoping with telescopic cage operated by hydraulic jack.
SAFETY DEVICES: Complying with DIN rules. Drives power cosumption 30 kW.